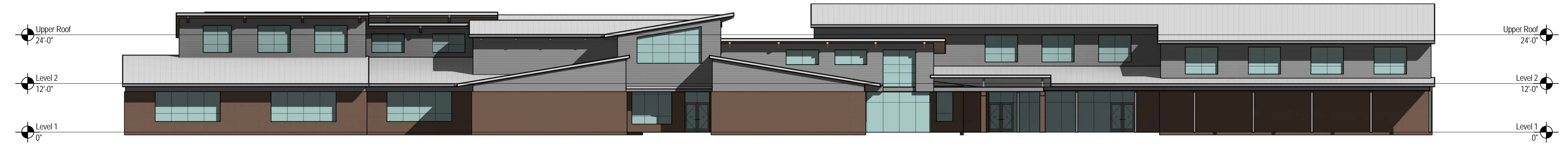




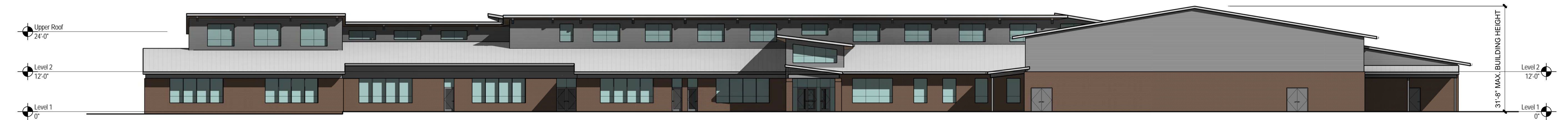
OVERALL EXTERIOR ELEVATION - SOUTH 4
SCALE: 1/16" = 1'-0"



OVERALL EXTERIOR ELEVATION - EAST 3
SCALE: 1/16" = 1'-0"



OVERALL EXTERIOR ELEVATION - NORTH 2
SCALE: 1/16" = 1'-0"



OVERALL EXTERIOR ELEVATION - WEST 1
SCALE: 1/16" = 1'-0"